
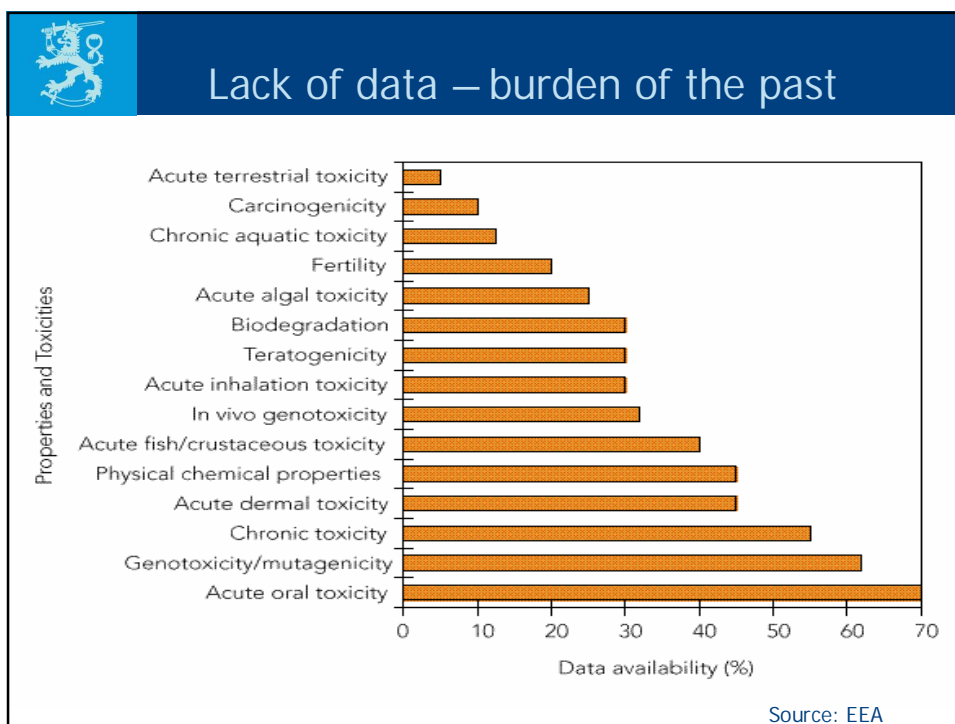


PRIME MINISTER'S OFFICE



REACH and the European Chemicals Agency

Jukka Malm
Director of Expert Services
Finnish Environment Institute





Why REACH?

Problem: Current EU chemicals management system is inefficient

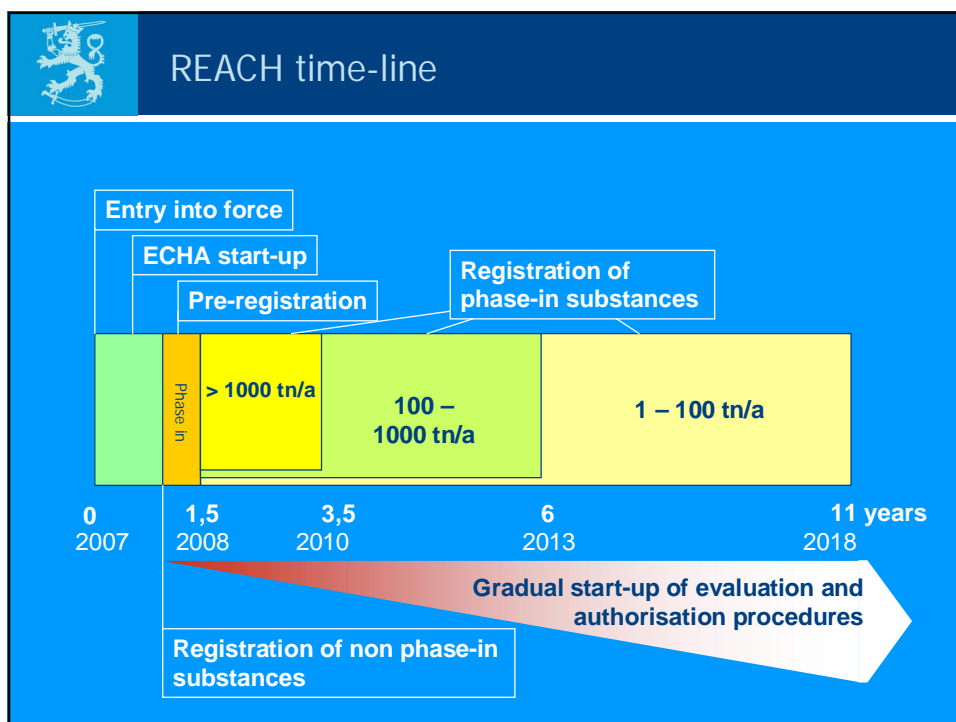
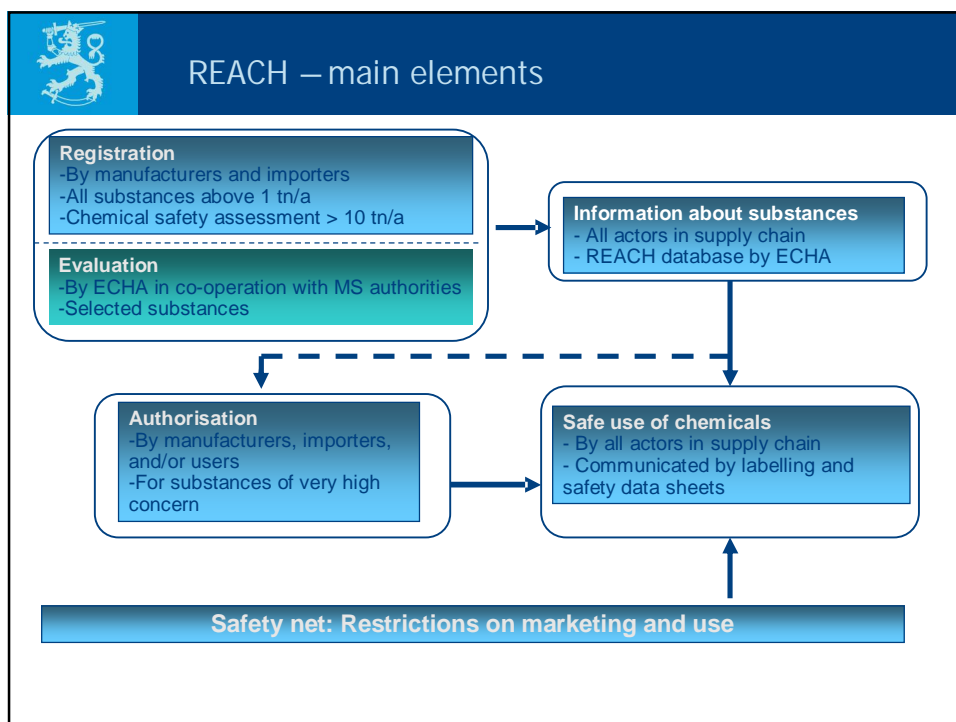
- Difficult to identify risks – difficult to manage risks:
 - Lack of information about most substances on the market
 - Burden of proof on public authorities
 - No efficient instrument to deal with problematic substances
- Lack of incentives for innovation
- Review of EU Chemicals Policy started 1998
 - Commission White Paper 2001
 - Commission Proposal for REACH Oct 2003
 - Adoption by Council and the EP Nov 2006

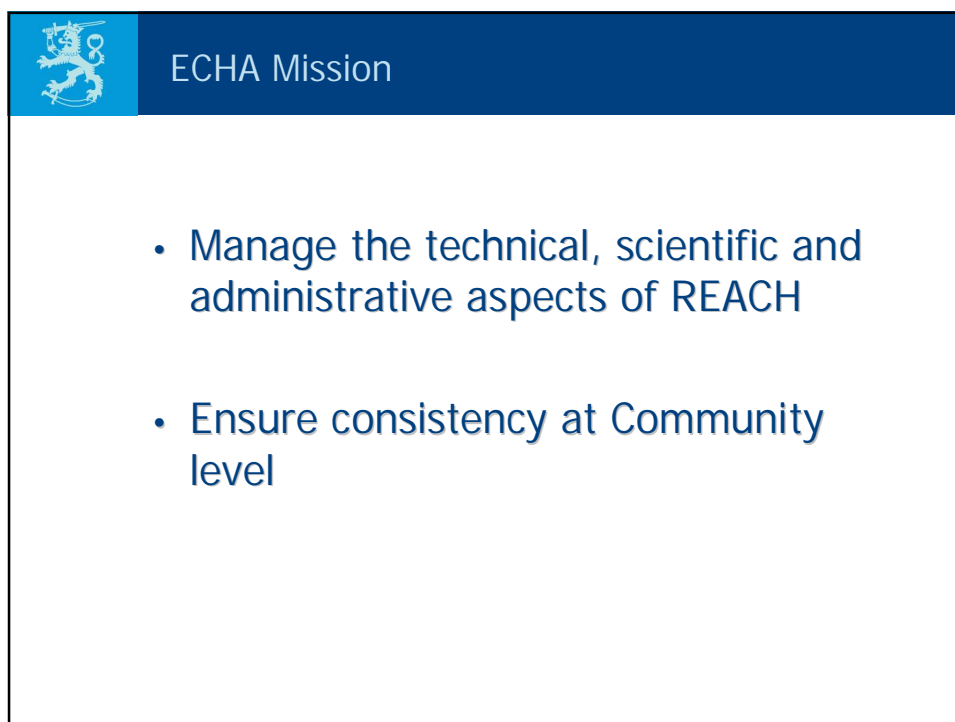
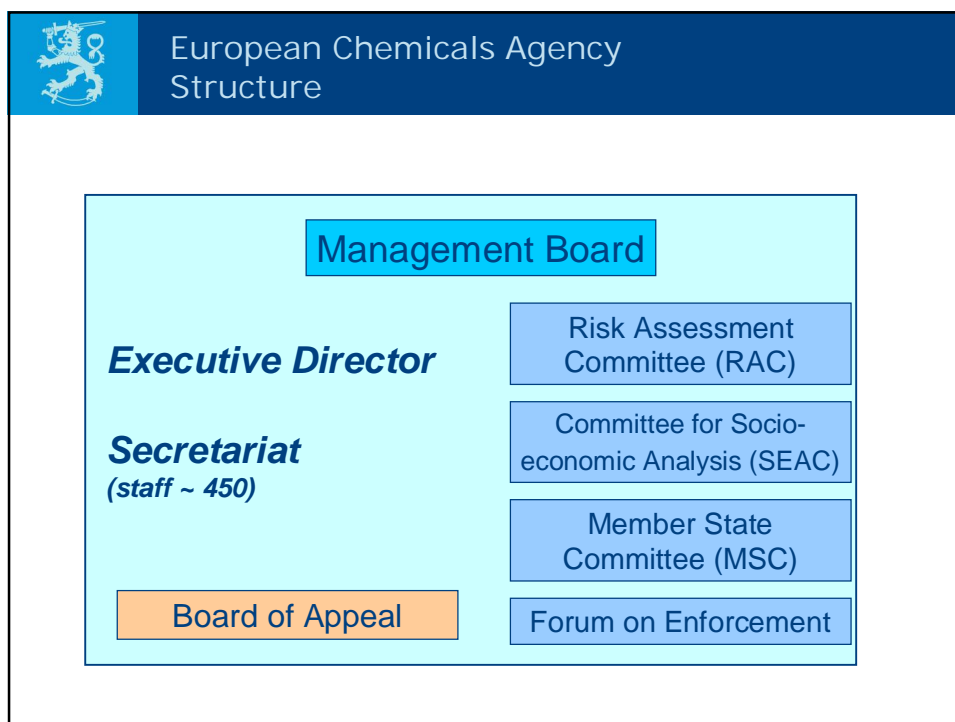



REACH Regulation

Regulation concerning Registration,
Evaluation, Authorisation and Restriction
of Chemicals

- Entry into force 1 June 2007
- REACH provisions will be implemented step by step
- All provisions in force by 11 years from entry into force

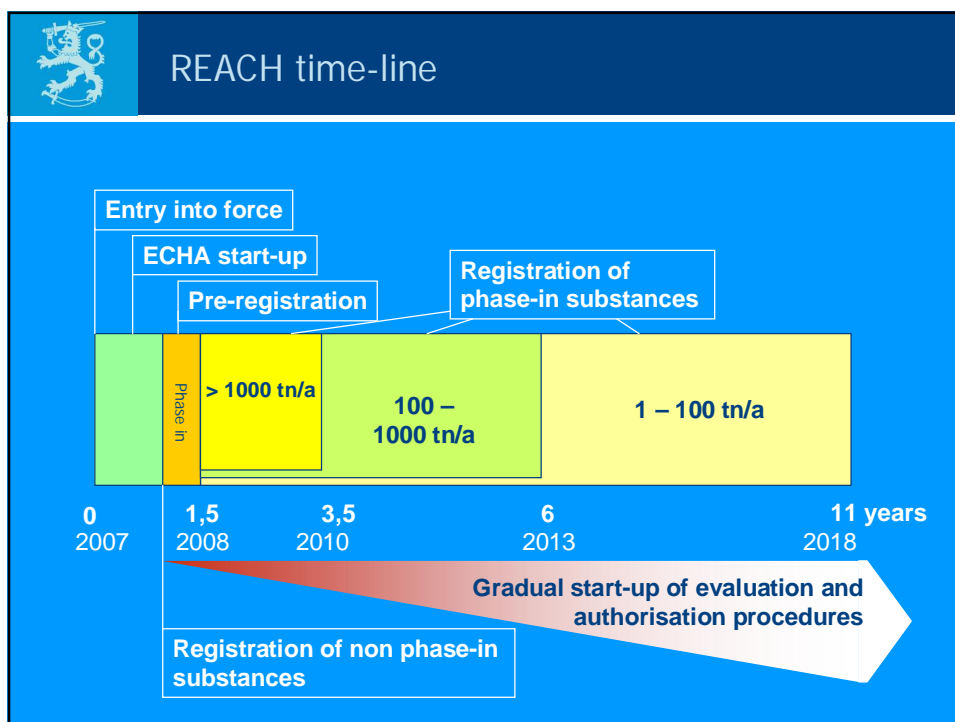


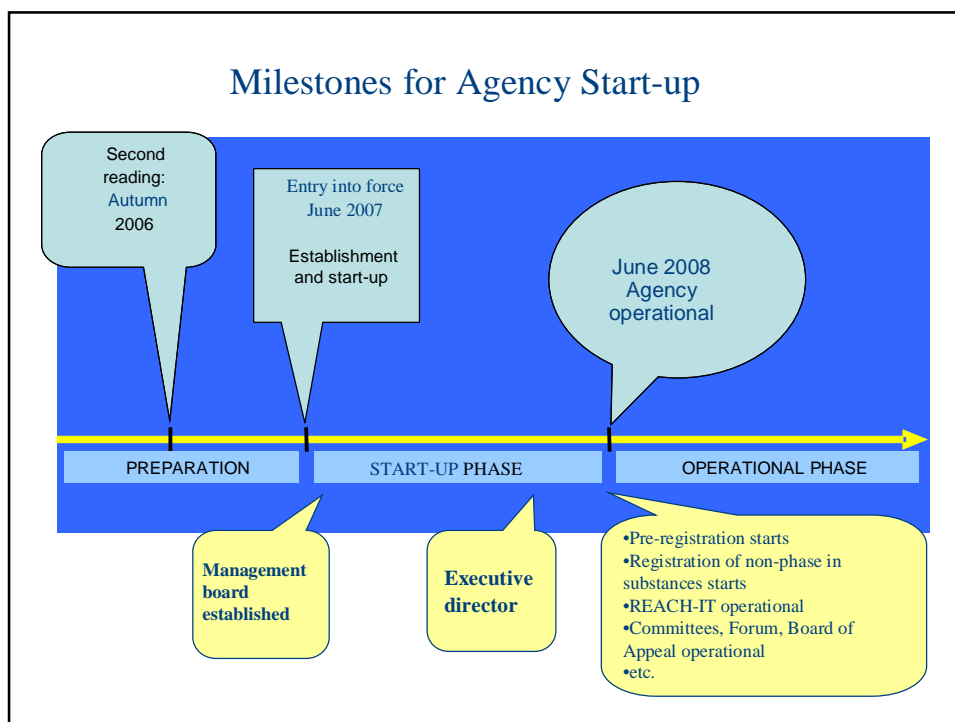




Role and Tasks of the Chemical Agency

- Operational tasks
 - management of the registration process
 - dossier evaluation and coordination of substance evaluation
 - management of the authorisation system
 - opinions and recommendations on risk management
 - REACH-IT system
- "Facilitator" role
 - development of guidance documents and formats
 - management of Agency committees (risk assessment, socio-economic, and Member State committees)
 - management of the enforcement Forum
 - advice for Member States helpdesks





ECHA website - European Chemicals Agency - Microsoft Internet Explorer

File Edit View Favorites Tools Help

Back Forward Stop Refresh Home Search Favorites

Address <http://ec.europa.eu/echa/>

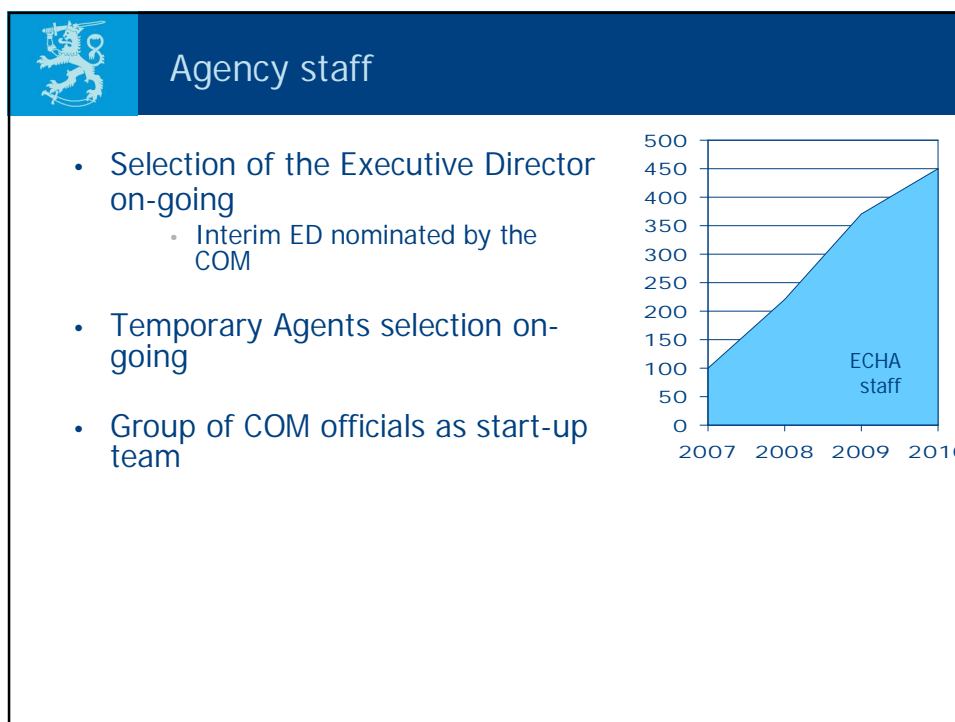
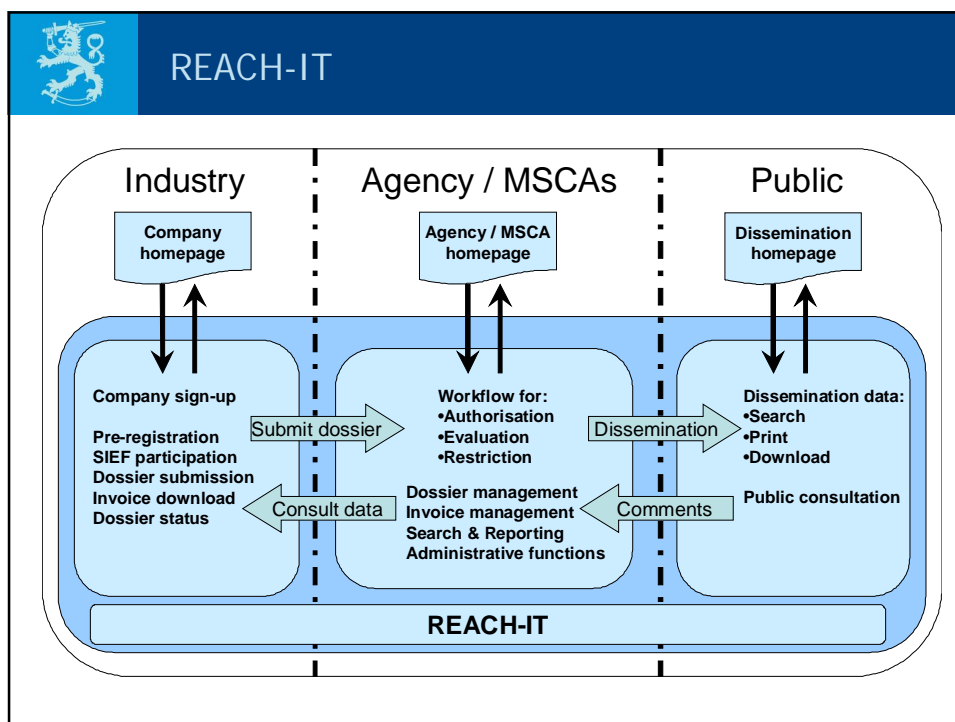
ECHA

echa.europa.eu

European Chemicals Agency

© 2007 - images by the European Commission

- BG** Европейска агенция по химикалите
- CS** Evropská agentura pro chemické látky
- DA** Det Europæiske Kemikalieagentur
- DE** Europäische Agentur für chemische Stoffe
- EL** Ευρωπαϊκός Οργανισμός Χημικών Προϊόντων
- EN** European Chemicals Agency
- ES** Agencia Europea de Sustancias y Preparados
- ET** Euroopa Kemikaaliamet
- FI** Euroopan kemikaalivirasto
- FR** Agence européenne des produits chimiques
- HU** Európai Vegyianyag-ügynökség
- IT** Agenzia europea delle sostanze chimiche
- LT** Europos cheminių medžiagų agentūra
- LV** Eiropas ķīmikāliju aģentūra
- MT** L-Aġenzija Ewropea tal-Kimika
- NL** Europees Agentschap voor chemische stoffen
- PL** Europejska Agencja Chemikaliów
- PT** Agência Europeia das Substâncias Químicas
- RO** Agenția Europeană pentru Produse Chimice
- SK** Európska agentúra pre chemické látky
- SL** Evropska agencija za kemikalije
- SV** Europeiska kemikaliemyndigheten





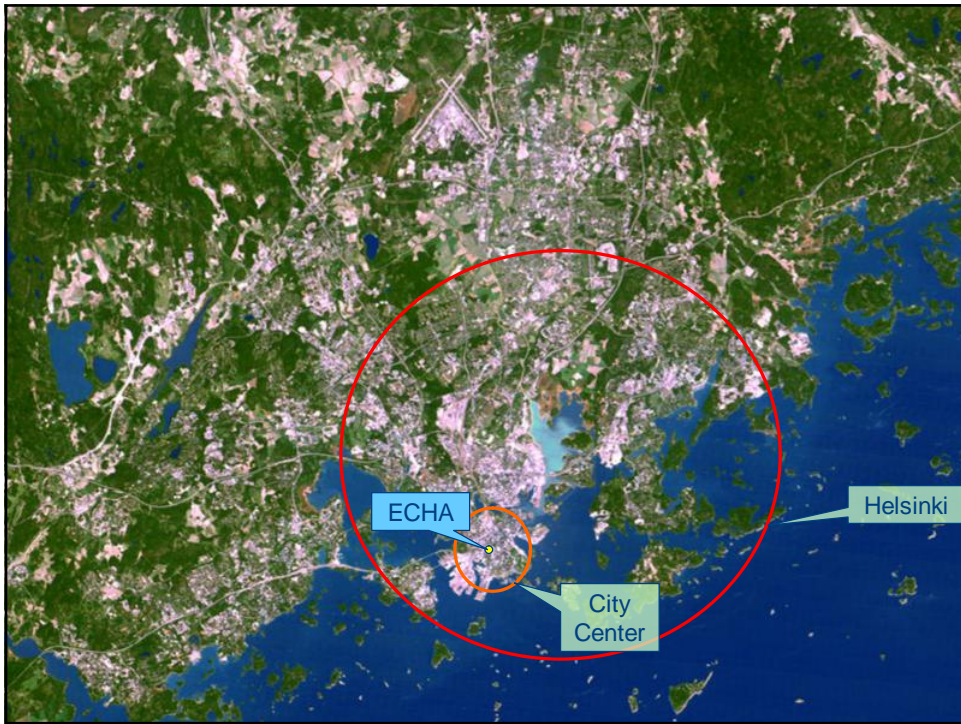
ECHA Management Board

- MB adopts:
 - General annual report
 - Annual and multi-annual work programmes
 - The final budget of the Agency
 - Internal rules and procedures for the Agency
 - Practical arrangements for implementing rules for access to information (ref Regulation 1049/2001)
- MB appoints:
 - Executive Director of the Agency
 - Members of the Agency committees
 - Chair, members and alternates of the Board of Appeal
- Composition:
 - 1 / each Member State
 - 3 / Commission
 - 2 independent persons nominated by EP
 - 3 observers from interested parties, nominated by COM



Finnish Support Activities

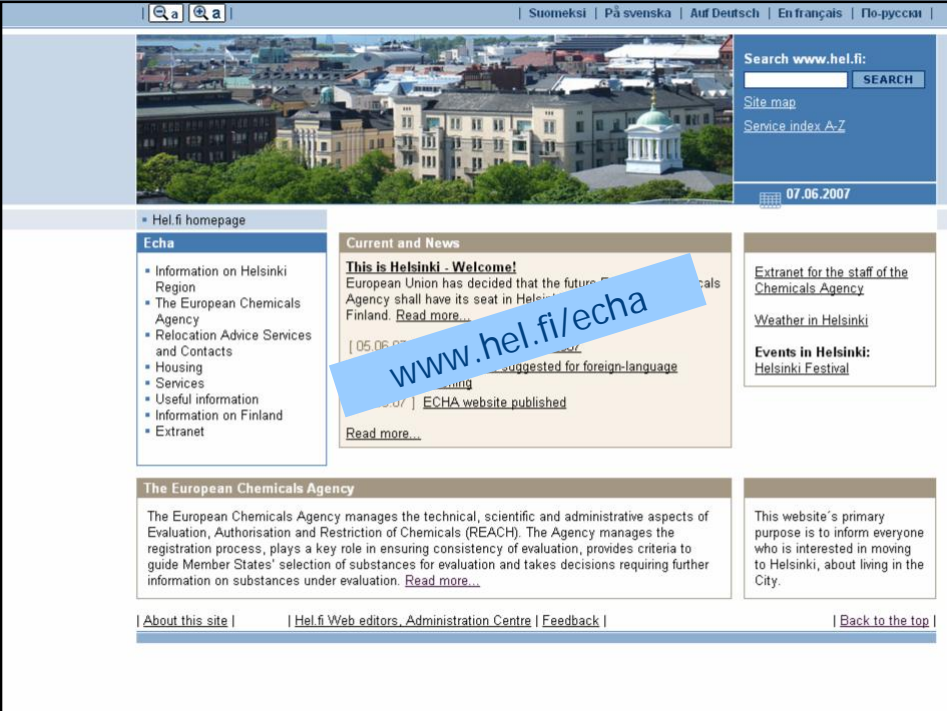
- Agency preparations coordinated and managed by Prime Minister's Office
 - Contact group chaired by State Secretary, Mr. Risto Volanen
 - Agency project, project manager Jukka Malm
 - Networking with relevant ministries, City of Helsinki, and other stakeholders
- Aim: facilitating establishment and set up of the Agency in Helsinki
- Work areas
 - Agency building
 - Staff information and support services
 - Seat Agreement negotiations
 - Support for COM
 - Hosting meetings in Helsinki
 - Media relations





Agency Office Premises

- Lease agreement signed on Feb 2006; Finland responsible for the lease in the beginning to ensure rapid build up of ECHA
- Location: Headquarters of Mutual Insurance Company Varma in Helsinki City Center
- Gradual increase of Office Space; up to 500 persons

www.hel.fi/echa

